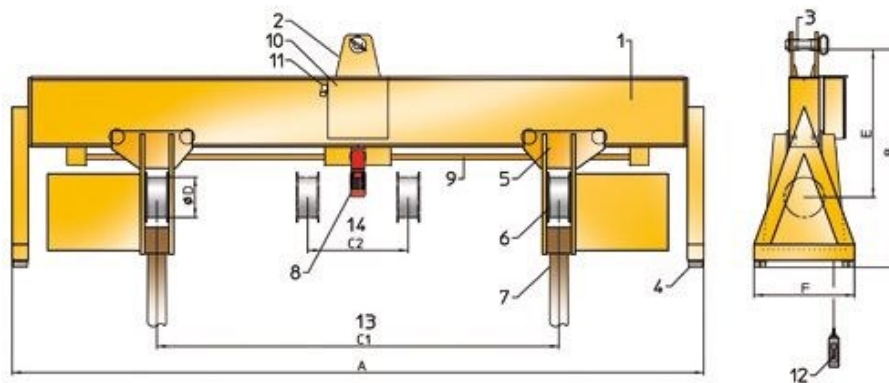


Load turning device **ROTOX RVE** at a glance:



ROTOX® RVE

Electrically adjustable, Capacity: 10,000 to 200,000 kg

Description of items:

1. Steel frame
2. Suspension
3. Suspension bolt
4. Rubber foot
5. Driving unit
6. Driving wheel
7. Chains or slings
8. Adjustment gear ($v = 1.0 \text{ m/min.}$)
9. Adjustment spindle
10. Control
11. CEE-plug, 5-pin
12. Pendant control box with control cable
13. Max. driving wheel distance
14. Min. driving wheel distance

Scope of delivery:

Basic equipment with suspension frame for crane hook, with control cable, with push button pendant station left/right and emergency stop, 400 V 50 Hz 4ph, 48 V control voltage, with CEE-plug, 5-pin

Capacity range

¹Turning moment / ²Turning speed / ³Weight (without belts)

Type	Capacity [kg]	C1 [mm]	C2 [mm]	A [mm]	B [mm]	D [mm]	E [mm]	F [mm]	Power / DC [KW / %]	TM ¹ [Nm]	TS ² [m/min]	W ³ [kg]
10000/4.0	10000	4000	1200	6700	1795	220	1095	1000	1.5/40	3600	2.6	2920
20000/4.0	20000	4000	1200	6700	1925	406	1225	1000	1.5/40	6400	2.7	3280
30000/4.0	30000	4000	1200	6700	2025	406	1325	1000	2.2/40	10500	2.5	3820
40000/4.0	40000	4000	1200	6700	2125	406	1425	1200	4.4/40	21000	2.5	4270
50000/4.0	50000	4000	1200	6700	2360	406	1660	1200	4.4/40	21000	2.5	4600